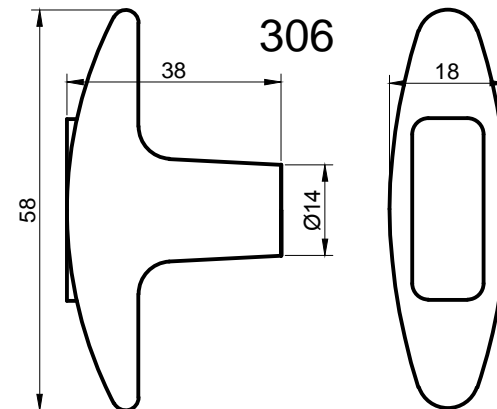
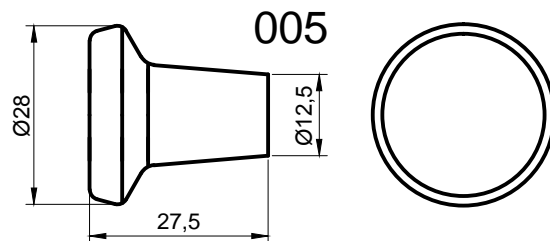


## BTM

- Bežné Tiahlo Mini
- vodiaca trubka je z pozinkovanej ocele, vnútorná tyč z nehrdzavejúcej ocele, rukoväť z plastu,
- vhodné pre ovládanie sytiča, vypínania motora, klapky kúrenia, alebo rôznych ventilov či západiek,
- je možné pripojenie Bežných Káblov VLD alebo klasických bowdenov,
- rukoväť je možné zvoliť.
- max. zaťaženie 10kg, zdih do 50mm, upnutie pomocou matice.

## Rukoväte - Handles



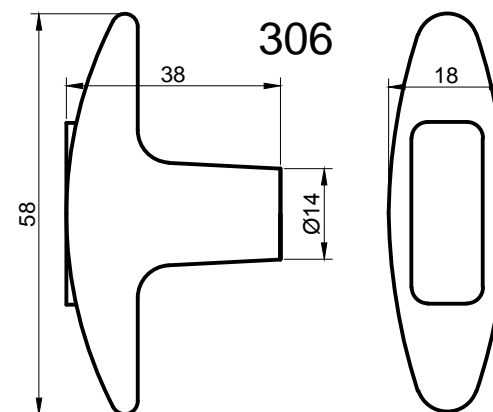
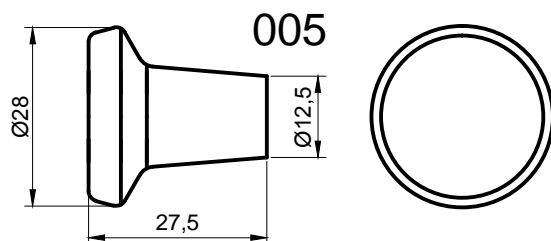
Non lock control heads are designed for remote engine shutdown/choke, latch/valve operation, and numerous other applications. For light to moderate loads. They are cost effective solutions to mechanically connecting a manual input source to a remote output, especially when space is limited or rod linkage and bell cranks are not suitable choices. Various T-handles/knobs as well as output end configurations are available. Features: Load: 25lb maximum, Travel: 2.00" maximum, Threaded mount. Material: Plated Carbon Steel Corrosion-Proof Control Heads.



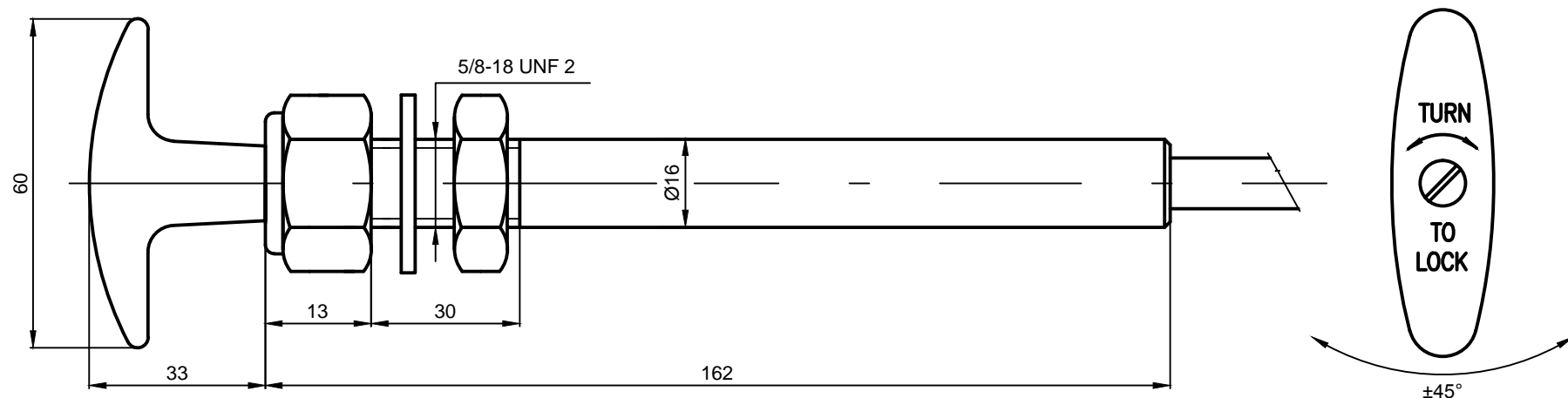
## BT

- Bežné Tiahlo
- vodiaca trubka je z pozinkovanej ocele, vnútorná tyč z nehrdzavejúcej ocele, rukoväť z plastu,
- vhodné pre ovládanie sytiča, vypínania motora, klapky kúrenia, alebo rôznych ventilov či západiek,
- je možné pripojenie káblov VLD alebo klasických bowdenov
- rukoväť je možné zvoliť
- max. zaťaženie 20kg, zdih do 75mm, upnutie pomocou matice.

## Rukoväte - Handles



Non lock control heads are designed for remote engine shutdown/choke, latch/valve operation, and numerous other applications. For light to moderate loads. They are cost effective solutions to mechanically connecting a manual input source to a remote output, especially when space is limited or rod linkage and bell cranks are not suitable choices. Various T-handles/knobs as well as output end configurations are available. Features: Load: 50lb maximum, Travel: 3.00" maximum, Threaded mount. Material: Plated Carbon Steel Corrosion-Proof Control Heads.



# OUT

- Otočné Uzatváracie Tiahlo
- vodiaca trubka z duralu, vnútorná tyč z nehrdzavejúcej ocele, rukoväť z čierneho plastu,
- umožňuje uzamknutie v akejkoľvek polohe v rámci zdvihu (zdvih maximálne 75mm)
- z odomknutého stavu pootočením o 1/8 otáčky (45°) v oboch smeroch sa tiahlo uzamkne,
- v uzamknutom stave je možné zaťaženie do 45kg,
- vhodné pre ovládanie sytiča, škrtiacej klapky alebo rôznych ventilov či západiek,
- je možné pripojenie káblov VLD a LD

These twist lock control heads are a robust and simple design — only one moving part. The T-handle is free to travel the full length of the control until locked. Rotating the T-handle 1/8 turn in either direction along the travel will secure loads up to 100lb, and yet unlocks with ease. They are cost effective solutions to mechanically connecting and locking a manual input source to a remote output, especially when space is limited or rod linkage and bell cranks are not suitable choices. Numerous choices available to meet customer requirements.