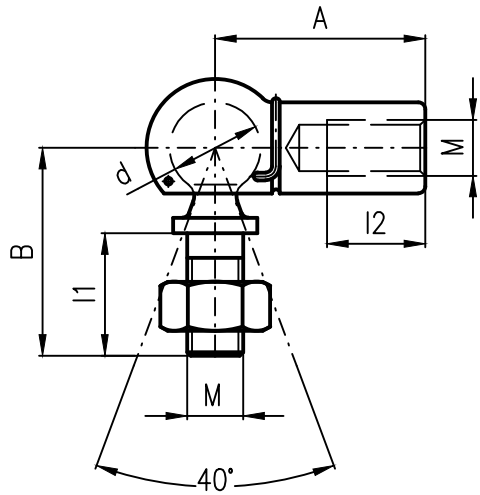
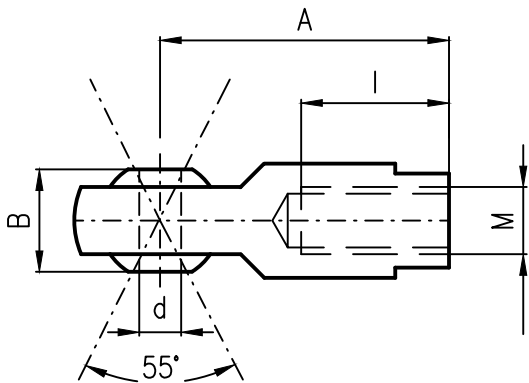


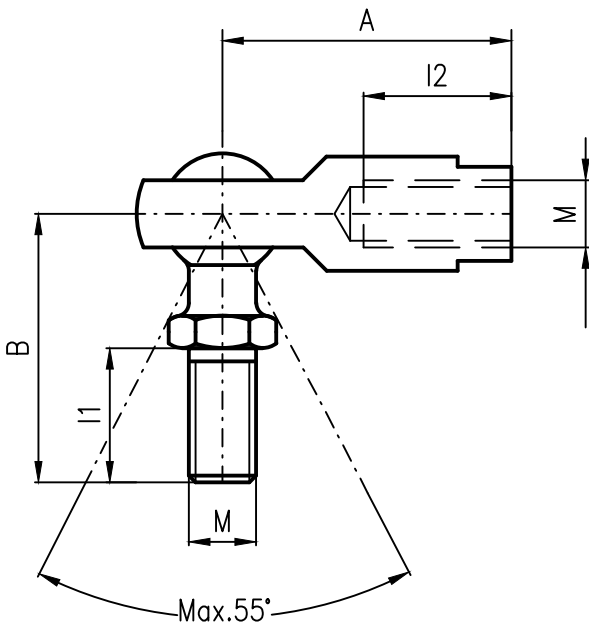
# KLBY – BALL JOINTS



TYP	M	d	A	B	l1	l2
175-403-M003	5	8	22	21	12	10
175-403-M004	6	10	25	24	13	12
175-403-M031	8	13	30	30	17	14
175-403-M041	10	16	35	36	20	15

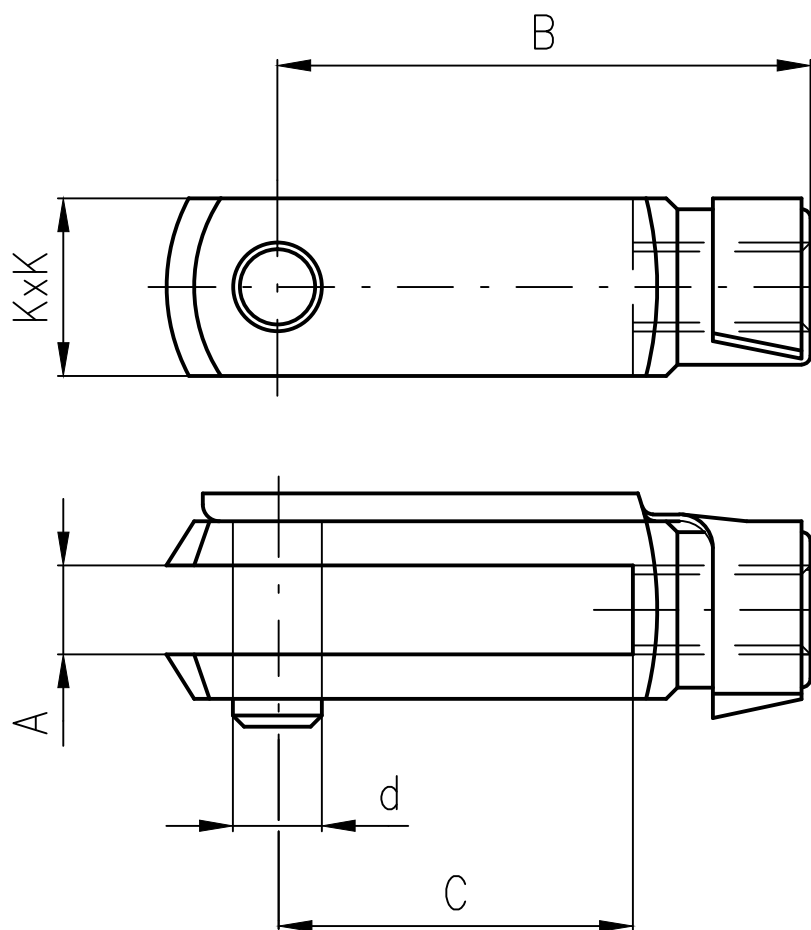


TYP	M	d	A	B	l	TYP
FJ-05M-ST	5	5	27	8	14	FB-05M-ST
FJ-06M-ST	6	6	30	9	14	FB-06M-ST
FJ-08M-ST	8	8	36	12	17	FB-08M-ST
FJ-10M-ST	10	10	43	14	21	FB-10M-ST
FJ-12M-ST	12	12	50	16	24	FB-12M-ST
NYLON		– KLZNÉ PÚZDRO –		BRONZ		
NYLON		– RACE –		BRASS		



TYP	M	A	B	l1	l2	TYP
FJ-05M-STs	5	27	20	14	10	FB-05M-STs
FJ-06M-STs	6	30	24	14	12	FB-06M-STs
FJ-08M-STs	8	36	32	17	16	FB-08M-STs
FJ-10M-STs	10	43	40	21	20	FB-10M-STs
FJ-12M-STs	12	50	48	24	24	FB-12M-STs
NYLON		– KLZNÉ PÚZDRO –		BRONZ		
NYLON		– RACE –		BRASS		

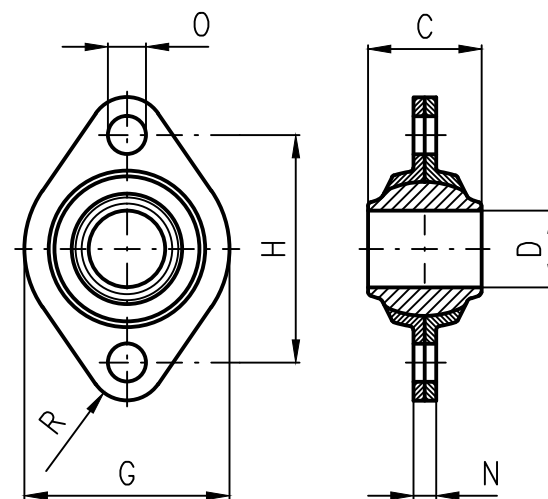
# VIDLICE – CLEVISES



TYP	M	d	A	B	C	KxK
175-601-M202	5	5	5	20	10	10x10
175-601-M204				30	20	
175-601-M206	6	6	6	24	12	12x12
175-601-M210				36	24	
175-601-M208	8	8	8	32	16	16x16
175-601-M212				48	32	
175-601-M214	10	10	10	40	20	20x20
175-601-M218				60	40	

## OTOČNÝ KL'B PLATE SWIVEL

TYP	C	D	G	H	O	N	R	VÁHA VEIGHT
	mm							kg
175-402-001	7.8	8.1	27	30	5	3	5	0.015
175-402-002	15	10.1	27	30	5	3	5	0.021
175-402-003	14	12.1	38	40	7	3	7	0.042
175-402-004	15	12.1	41	52	7	4	7	0



## ÚPINKA "U" U - BOLT

TYP	A	B	C	D	VÁHA VEIGHT
	mm				kg
161-010-001	6.35	24.6	14.2	15.0	0.0166
161-010-002	7.9	26.2	12.7	18.3	0.0262
161-010-003	7.9	26.2	12.7	19.8	0.0283

